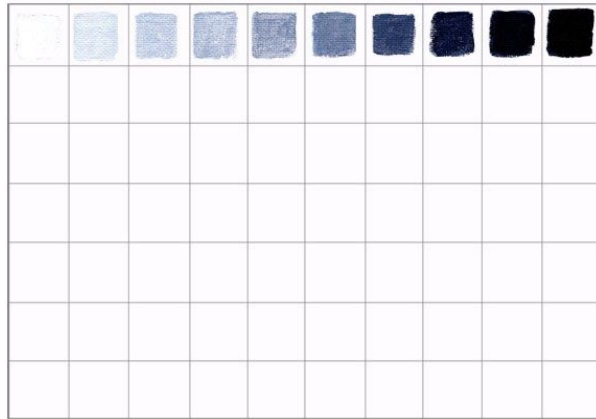


Painting 1

Gray Monochromatic Still Life Painting Assignment

Instructor: Deirdre Murphy



Make a painting from the class still life working from direct observation. Using your thumbnail painting sketch, choose your point of view. Begin by making a drawing with the brush directly on canvas. Establish the major forms and relationships. **Key concept is to start identifying the 3 elements of color in each mixture.**

Saturation Temperature Value

Analyze the planar and volumetric forms. Main goals are value and temperature. Pay special attention to hard and soft edges. Observe the light and how it plays across forms. Be as specific about major changes in surface quality and light as you are with minor changes.

Technique / Concepts:

Value / Light to Dark

Temperature / Warm to Cool

Hard edge / Soft edge OR High Contrast / Low Contrast

Chromatic grays / Neutral made by mixing complementary colors and white

Figure / Ground relationships

Work session: January 27- 29, Feb 3

Critique: Feb 5 Painting and Grid DUE

Format: 12" x 16" canvas and 1 sheet of canvas paper

Tools: Palette knife only NO brush

Palette: Titanium White, Ivory black, primary and it's complement, cool and warm mixed black

Process

Step 1: Grid out canvas paper with 12 - 1" squares (tape to board)

Step 2: Draw still life composition in sketchbook which include a few objects and shadow/light shapes within the environment then transfer the sketch to canvas.

Step 3: Choose the largest shape (background) and mix the color. Use a palette of white plus a parent color and its complement to make a series of chromatic grays. Put the mixed gray on your grid then apply it to your painting. Continue this process to fill at least 12 gray squares. Think of your painting like a puzzle fitting color next to color shapes.

Step 4: Be convinced of where the darkest dark is in the still life and the lightest light. Using your palette knife block in major areas of value across the picture plane. Mix a warm black and a cool black. You cannot use these exclusively. Directional light is key.

Artists:

Yvonne Jacquette
Wayne Thiebaud
Agnus Martin
Robert Ryman

Giorgio Morandi
Lucien Freud
John Singer Sargent
Will Cotton

Resources:

<https://paintingperceptions.com/>

<http://www.drawingandpaintinglessons.com/Painting-Lessons/Mixing-Neutral-Colors.cfm>

White Still life Grading Rubric / 100 points**Technique/Craftsmanship:**

Ability to mix clean, consistent colors

Ability to control the edge quality to describe the form and space

Shape definition to describe form

Understanding of the concepts:

Use of warm and cool colors to control the space

Ability to mix subtle temperature changes

Ability to mix subtle value changes

Ability to mix saturation changes

Composition/ use of the page:

Interest and activation of the picture plane

Understanding of figure/ground, positive/negative

Volume, form and space through use of color

Creativity:

Level of interest/surprise

Inventiveness, interpretation beyond expectation

Completion and Effort:

Ambition, time spent, intensity of effort